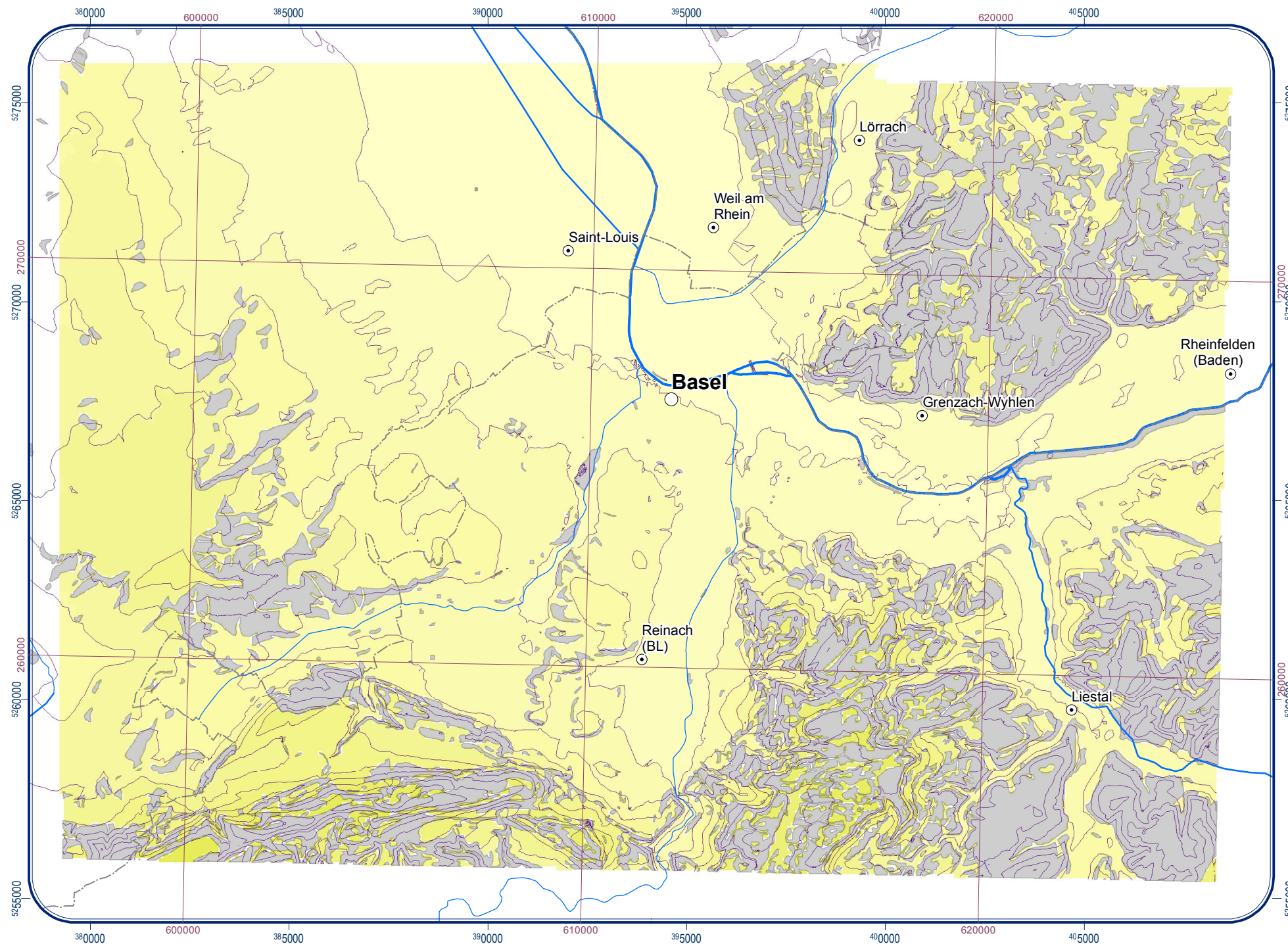
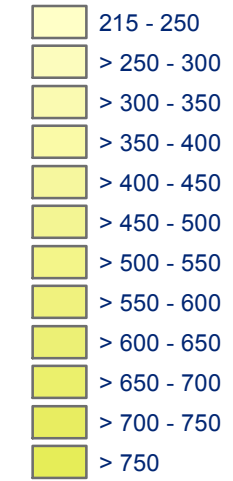


## 7.1 Schichtlagerung Basis Lockergesteine (Projektgebiet Schweiz) Isohyse de la base du Plio-Quaternaire (Modèle suisse)



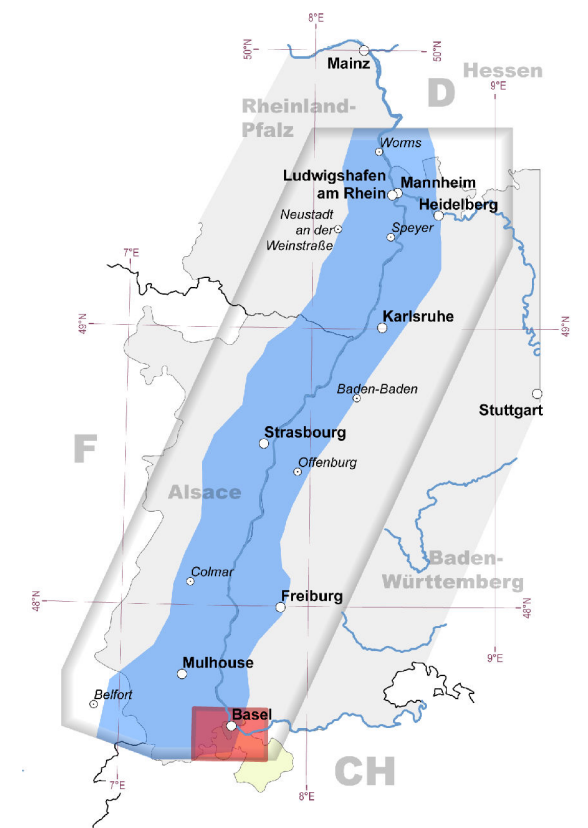
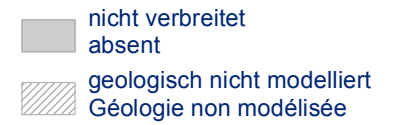
### Tiefenlage | Profondeur

[m NN] | [m NGF]



— Isohypsen (50 m-Äquidistanz)  
 Isohyse (équidistance de 50 m)

### Verbreitung | Occurance



Lage des Modellgebiets | Zone modélisée