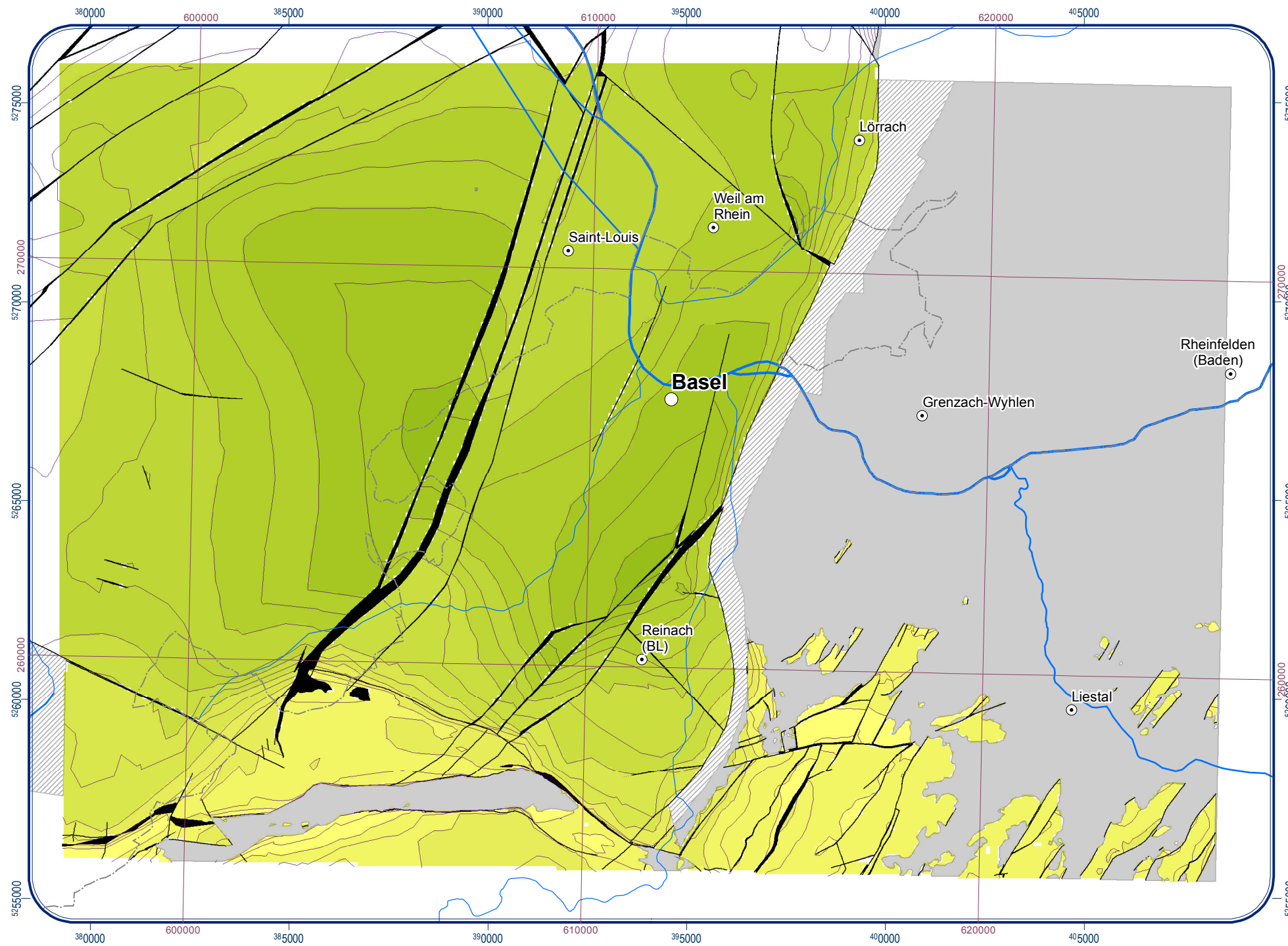


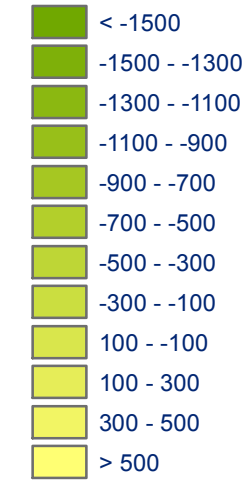
**7.3**

**Schichtlagerung Oberfläche Haupttrogenstein (Projektgebiet Schweiz)  
 Isohypse au toit de la Grande Oolithe (Modèle suisse)**



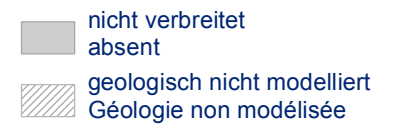
**Tiefenlage | Profondeur**

[m NN] | [m NGF]

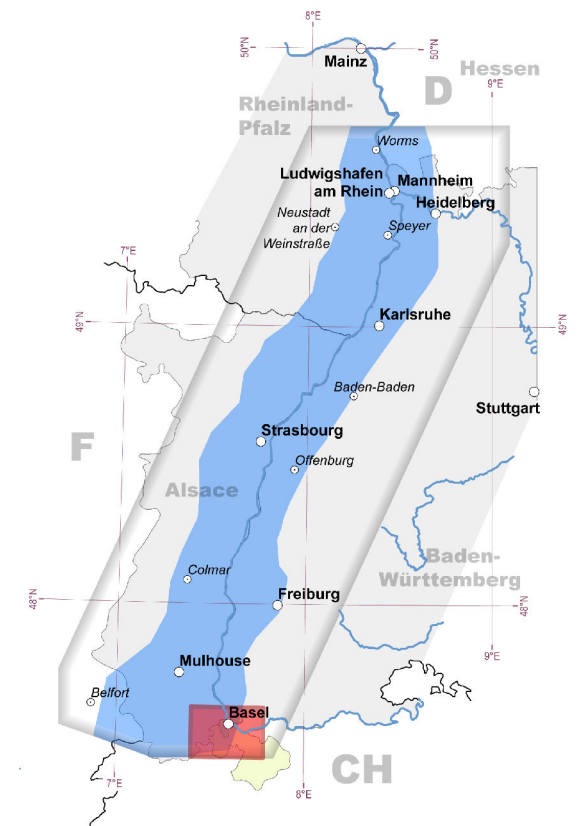


— Isohypsen (100 m-Äquidistanz)  
 — Isolhypse (équidistance de 100 m)

**Verbreitung | Occurance**



**Tektonik | Tectonique**



**Lage des Modellgebiets | Zone modélisée**